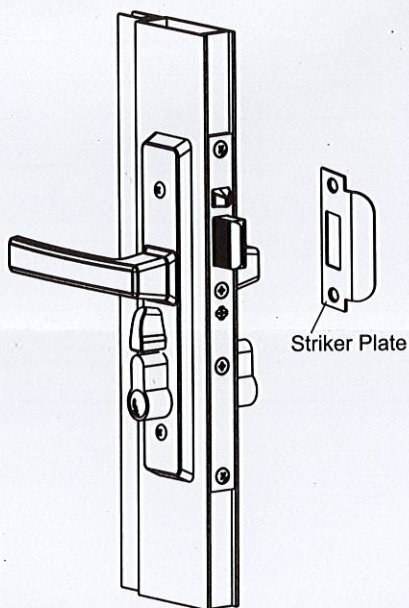



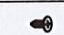

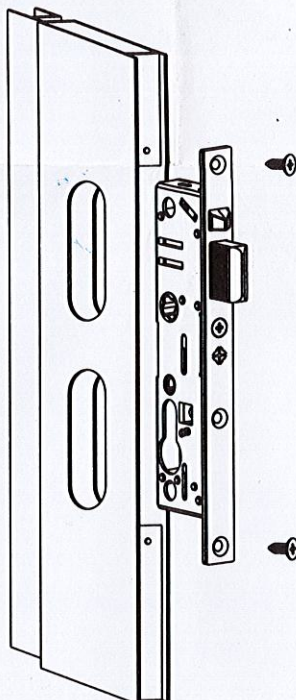


SN: B2



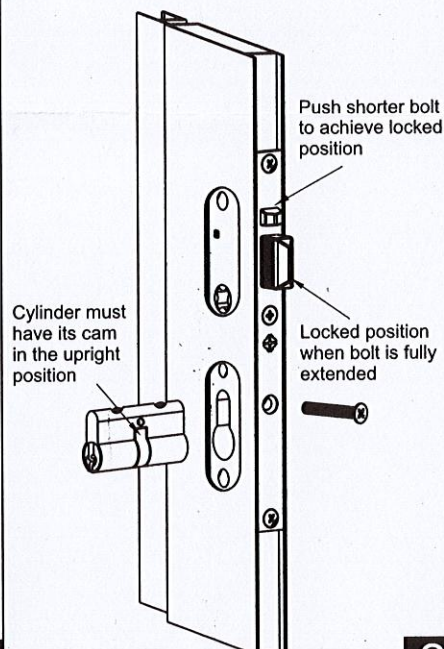
Cylinder Fixing Screw		1
Fixing Screw		2
Spindle		1
Lock Body Screw		2
Striker Screw		2

After sliding the lock body into the door cut out fasten with the two self tapping screws provided.



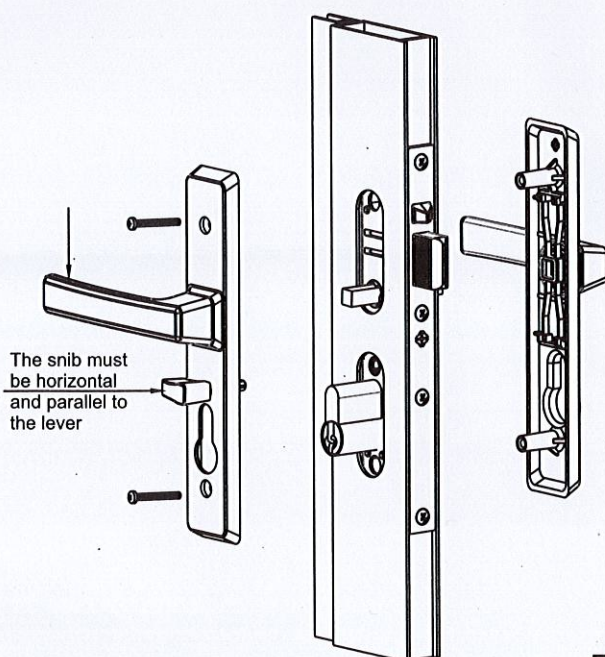
1

Ensure the cylinder cam is inside the cylinder & the locking bolt is fully extended, then insert the cylinder and fasten with the screw provided.



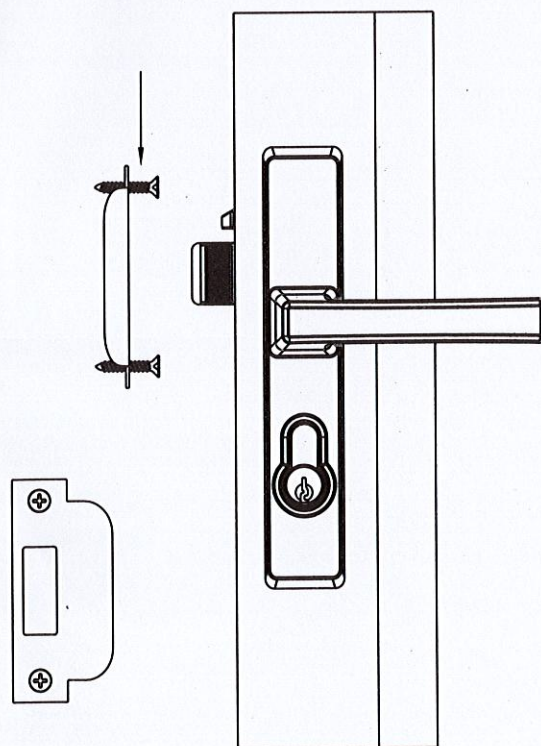
2

Insert the square drive spindle into the lock body. Then place the outer furniture set with its handle in the horizontal position. Then place the internal furniture set on, ensuring the handle and snib are both in the horizontal position. Fasten the furnitures with screws provided.



3

A 20 mm hole must be made in the jamb to take the main bolt. This rectangular mortice cut out must be made central to the main bolt.



4