

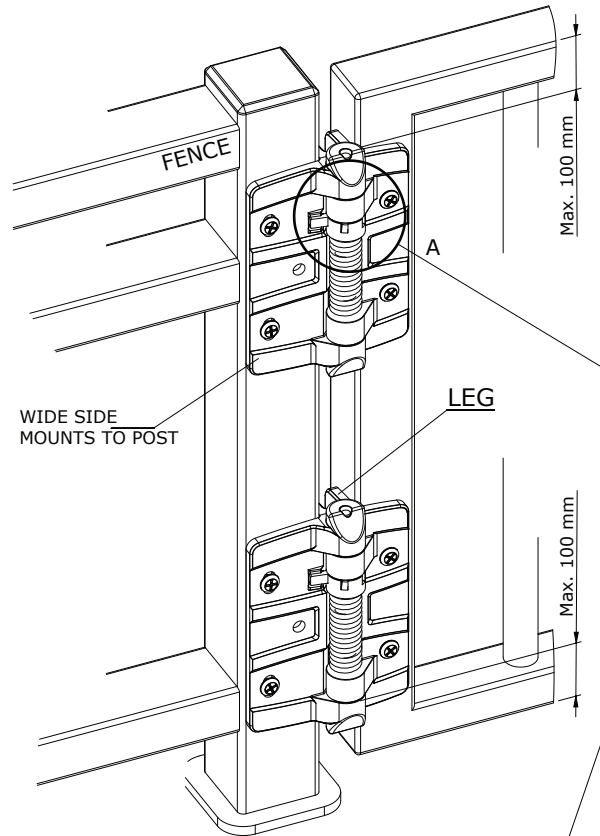
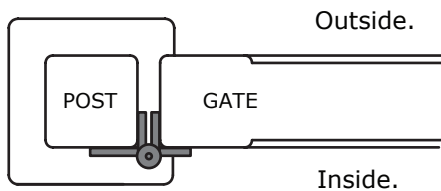
Installation instructions

The hinge should be mounted as shown.

The leaves should be positioned on the outside surface of the posts when the gate is closed - see below.

The top edge of the upper hinge should be mounted within 100mm of the top surface of the top rail and the bottom surface of the lower hinge should be mounted within 100mm of the lower surface of the lower rail.

Use screws to fix the legs of the hinge to the sides of the fence and gate post.



SPRING TENSION ADJUSTMENT

To tighten tension, insert the adjustor key supplied, in hole beside pin.

Rotate key so the spring tension fixing pin comes loose from leaf.

Remove pin, rotate the key further away and insert the pin into the next hole.

Rotate key back until pin rests against the leaf in its recess.

Adjust one pin position, one hinge at a time.

Reduce spring tension: Insert the adjustor, leaving one hole open between key and Spring tension fixing pin.

Rotate key so the spring tension fixing pin comes loose from the leaf.

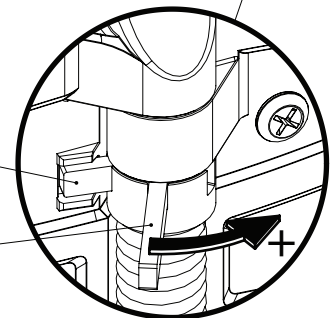
Remove pin, insert pin into the hole closest to the key.

Rotate key back until the pin rests against the leaf within the recess.

Tension is decreased by one position

FIXING PIN

ADJUSTOR KEY



MAINTENANCE: The hinge should be inspected annually or more frequently if the gate is used often. Spring tension adjustments should be made as needed.

Do not use petroleum based lubricants on the moving parts of the hinge. Lubricate with powdered graphite only. Keep the hinge free of contaminants, such as sand, ice and dust, as they could impair its function.