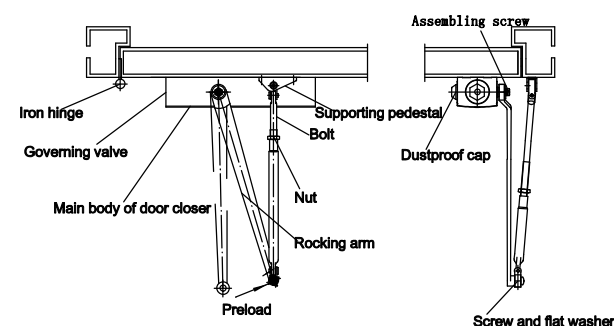
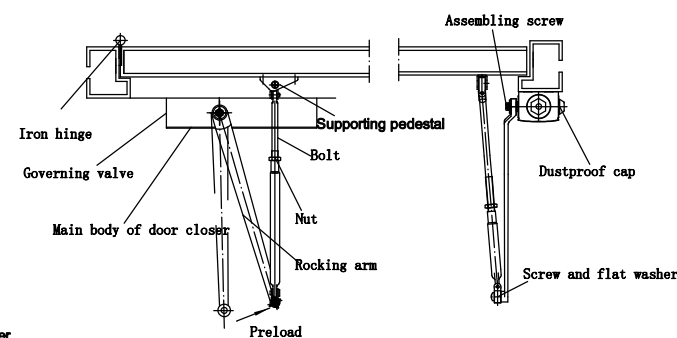


For installation on the pull side of the door



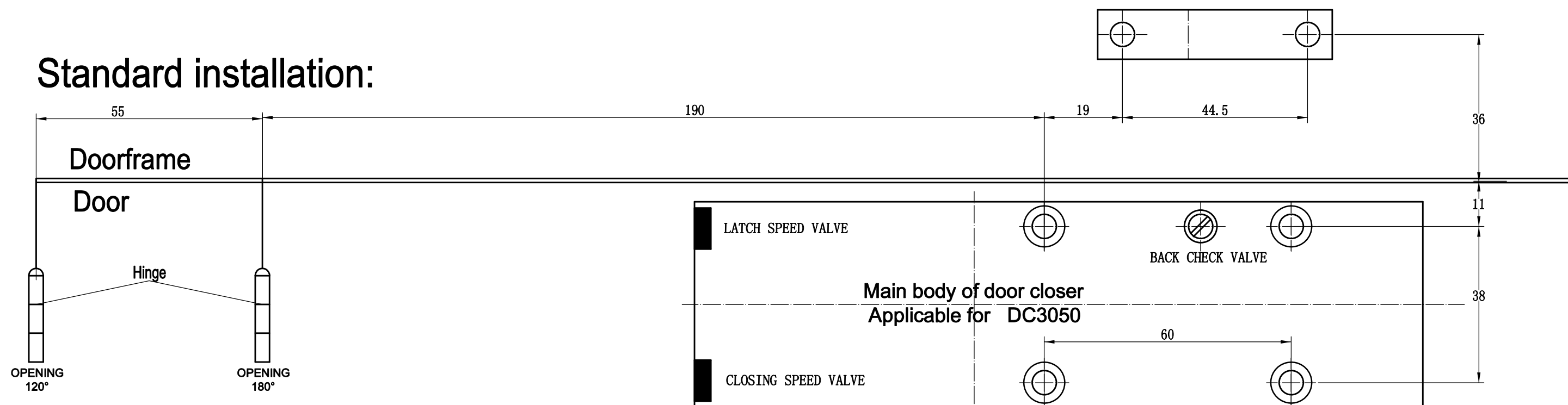
For installation on the push side of the door



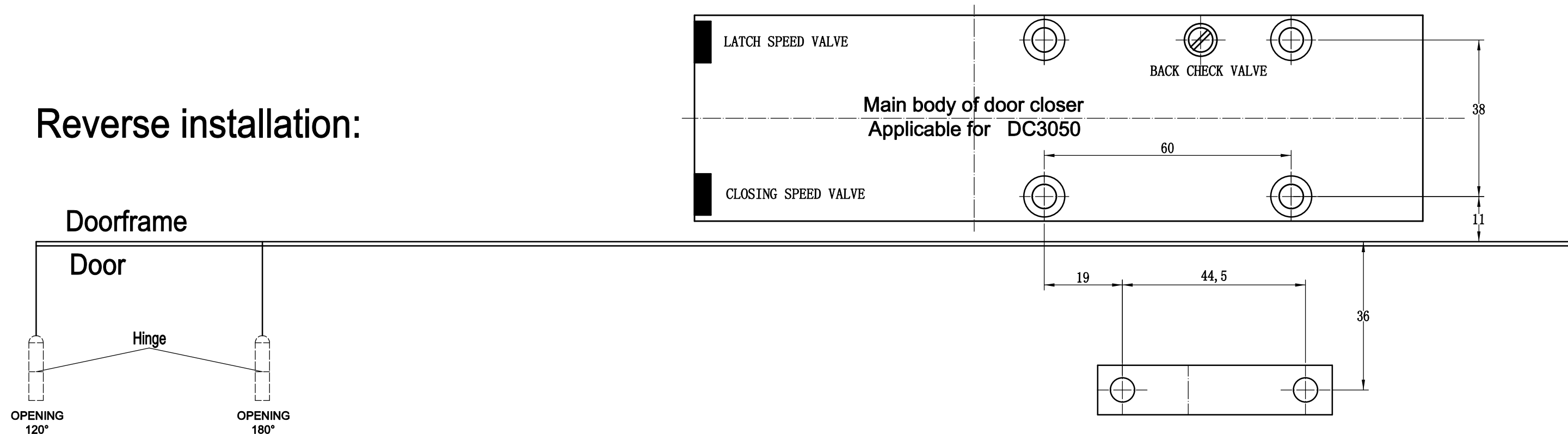
## Standard Installation

1. Using the templates below mark the door where you would like to install the closer. Note which side the hinges are on and whether you require a LEFT hand installation or RIGHT hand.
2. Line up the closer the markings and screw to the door, ensuring that the governing valve is facing opening side of the door. Note, you may need to predrill pilot holes before fixing the closer to the face of the door.
3. Fit the closer arm to the main body of the closer and the supporting pedestal to the door frame. To do this you may need to unscrew the fixing screw at the elbow of the arms.

## Standard installation:

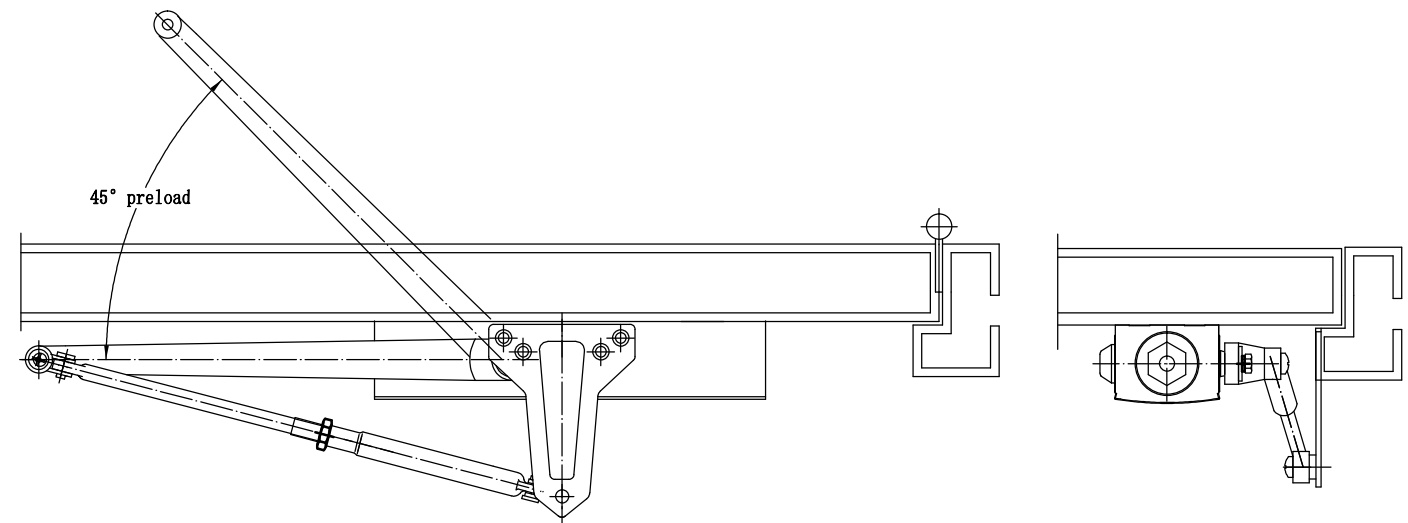


## Reverse installation:



# Parallel installation:

1. Mark locations of attaching screws on door and frame as shown.
2. Assemble main arm to closer with 45 degree preload as shown. Using a wrench on the bottom spindle into position. Attach arm to spindle with screw.



## Adjustments:

1. Latching speed :Adjusting for additional latching power to secure the latch in to the strike plate on the door jamb.
2. Closing Speed :Turn the valve clockwise to slow the speed down and counter clockwise to increase the speed.
3. Back Check Control :The intensity of the back check action is regulated by this valve. Note that it is damaging to the closer if the checking action is too abrupt and back check should never be used in lieu of a door stop.

